

# Submarine Electrophoresis System with built-in PowerSupply **WSE-1710 Submerge-Mini**

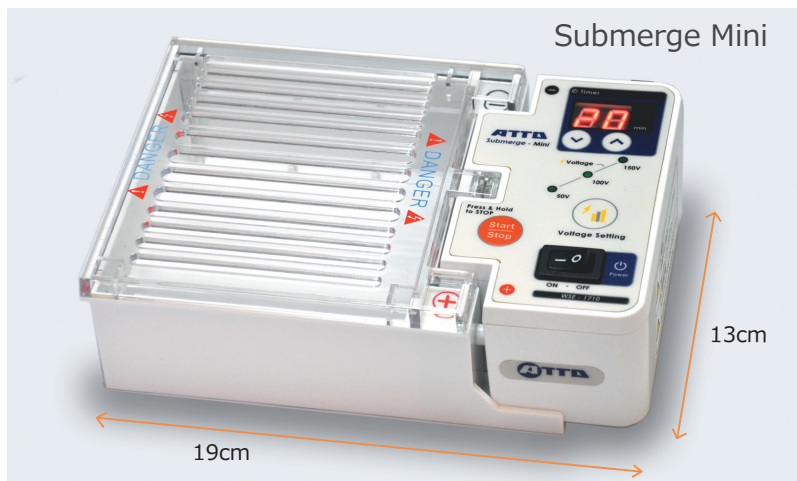
~Simple and Easy system for agarose electrophoresis~



150V High voltage, Timer setting, Alarm, Compatible with multi-channel pipette !

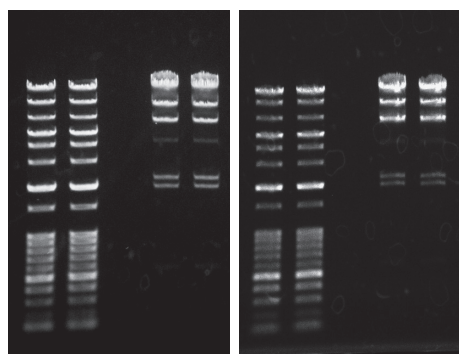
## Compact, safety, and high performance electrophoresis system

DNA agarose electrophoresis apparatus with built-in power supply



- ☆ **Output Power: 50V, 100V, 150V**
- ☆ **Count-down Timer with Alarm:**  
Program range 0 to 99 min, or hold.
- ☆ **Safety design**
- ☆ **Buffer Volume: ~200 m L**
- ☆ **Gel casting sets are included**  
2 Large trays, 4 Small trays
- ☆ **Ultraviolet transmission tray**  
Compatible with multi-channels pipette  
Well width of Comb: 3mm/5.8mm

The electrophoretic pattern is not influenced by high voltage.



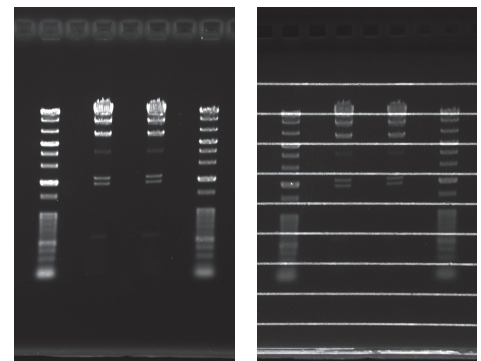
100V 30 min

150V 20 min

DNA ladder marker and  $\lambda$  Hind III marker were separated by 1% agarose gel with TAE buffer. Left; 100V, 30min, Right; 150V, 20min. The electrophoretic patterns and migration distance of each band were almost the same between 100V and 150V results.

## UV transmission tray

Lines on gel tray are emitted by excitation light (UV). These lines help to confirm the migration distance of each band.



Without tray

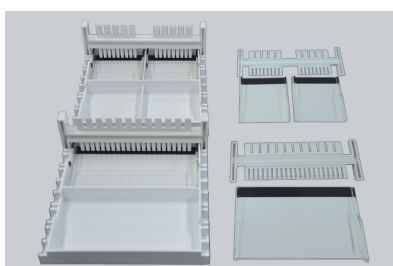
With tray

# Specification

	WSE-1710 <b>Submerge-Mini</b> (2322100)
Gel Tray	S: 54 × 60 mm (4 pcs), L: 110 × 60 mm (2 pcs), UV
Comb size	S: 9 well × 2pcs/5 wells × 2pcs, L: 22 wells/12 wells × 2pcs Width 3 mm/5.8 mm, Thickness 1 mm, Compatible with multi-channel pipette
Buffer volumes	200 ~ 230mL
Tank size	110 × 121 × 43mm
Power supply Input	AC100~120V, 50/60Hz
Output	DC50V /100V / 150V 40W
Timer	Count-down, time range is 1 ~ 99 min, Alarm
Safety	Turn off the power without setting lid (Error # E1, Alarm)
Size	190 × 130 × 60mm 0.45kg



Electrophoresis system



Gel casting set, S &amp; L

Tray size is the same as that of Mupid2 plus.  
Tray of Mupid exU is not available.

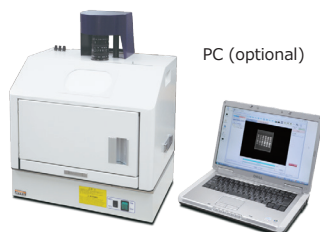
Gel casting set

2322109	Gel casting S & L
2322108	Gel casting L
2322107	Gel casting S

## Related products

Gel documentation system

### Printgraph series



#### WSE-5100 Printgraph MEGA

External PC control system  
Resolution : 1.4 mega pixels  
Light source : UV (optional)  
Blue/Green LED (optional)

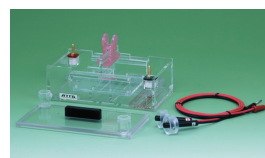


#### WSE-5200 Printgraph 2M

Touch panel control system  
Resolution : 2 mega pixels  
Light source : UV (included)  
White epi (included)  
RDG light source (optional)  
Printer (optional)

Submarine electrophoresis apparatus

### Submerge series



AE-6100



AE-6111

#### AE-6100/6111 Submerge

Gel size : AE-6100 80x100mm  
AE-6111 120x160mm  
Comb : AE-6100 10 well, 5mm width  
AE-6111 26/13 well, 3/6mm幅  
Tray : UV transmission tray

For more information, please contact us:



## ATTO corporation

Providing research solutions for Biochemistry/Molecular Biology/Genetic engineering Development Production/Distribution/Service

■ Head Office 〒111-0041 3-2-2 Motoasakusa, Taito-ku, Tokyo TEL (03)5827-4861 FAX (03)5827-6647

■ URL <http://www.atto.co.jp/>

■ Mail: [info@atto.co.jp](mailto:info@atto.co.jp)